

# Travel Tips & Suggestions



**Alzheimer's Prevention Clinic**  
**Weill Cornell Memory Disorders Program**  
*at NewYork-Presbyterian / Weill Cornell Medical Center*



Weill Cornell Medical College



NewYork-Presbyterian  
Weill Cornell Medical Center

# Travel Tips & Suggestions

## **The Alzheimer's Prevention Clinic is located at:**

428 East 72nd Street  
Suite 400  
New York, NY 10021  
Phone (212) 746-0226 / Fax (212) 746-5584

## **Closest hotel affiliated with Weill Cornell Medical Center:**

The Helmsley Tower  
1320 York Avenue  
(between 70th & 71st Streets)  
(212) 472-8400 or 1-800-HM-TOWER

Single room	\$255
Junior Suite	\$265
Corner room	\$275
Bedroom Suite	\$300



The Guest Facility at The Helmsley Medical Tower is located directly across the street from the clinic. Rates vary and no tax is charged to room (rates above quoted as of January 2014)  
Please note:  
These rooms can only be reserved to when visiting the medical center for a clinic visit.

For more information, visit:  
<http://www.weillcornell.org/visit/accommodations/helmsley.html>

Additional hotel options are located on page 4 of this document.

## **Overview for out of town visitors:**

For more information, visit:  
<http://www.weillcornell.org/visit/accommodations.html>

New York City is serviced by three major international Airports. LaGuardia is the closest (LGA), as well as Kennedy (JFK) and Newark (EWR) are all within a 30-minute taxi ride to midtown Manhattan.

The Helmsley Medical Tower Apartments offers a convenient place to stay during your visit. The Guest Facility at the Helmsley Medical Tower is located next door to New York Presbyterian Hospital / Weill Cornell Medical Center. This location makes the Guest Facility ideal accommodations for you and your family.

## **Directions to the hospital:**

<http://weill.cornell.edu/visitors/index.html>

The neighborhood is readily accessible by both car\* and public transportation. \*If you are driving, please note that traffic in the neighborhood is often heavy, and parking in private garages is expensive. NYP-WCMC is located directly off the FDR Drive, a highway, which runs along the East side of Manhattan.

- From the South (downtown), take the FDR to exit at 61st Street, turn right on York Avenue.
- From the North (uptown), take the FDR to exit at 71st Street.

## **Transportation:**



Taxis ([http://www.nyc.gov/html/tlc/html/passenger/taxicab\\_rate.shtml](http://www.nyc.gov/html/tlc/html/passenger/taxicab_rate.shtml)) charge by distance, as well as time spent not moving. A typical charge from LaGuardia Airport is \$24-\$28 plus tolls and tip, JFK Airport is \$52 plus tolls and tip, and Newark Airport is \$69 - \$75 + \$15 surcharge plus tolls and tip. Pennsylvania Station to NYP-WMC would be about \$15-20 plus tip, depending on the time of day.

NYC public transit is both safe and efficient. To travel by subway, purchase a Metro Card at the booths or vending machines in the subway stations. To travel by bus, you can use a Metro Card (purchased at subway stations) or exact change (\$2.50). Transfers are free.

If you need further information regarding NYC public transit (<http://www.mta.info/nyc>) or directions, you may call contact the MTA at 718-330-1234 (6am-10pm).

New York is served by two major train stations, an intercity bus terminal, and three major airports. NYP-WCMC can be reached by taxi or public transportation from all of these transit centers.



**From Pennsylvania Station:**  
(34th Street between 7th and 8th Ave)

By Bus: Take Eastbound M34 to East 23rd St/First Ave and transfer to the Northbound MI5 . Take MI5 to 70Th Street.  
By Subway: Walk to 34th Street & 6Th Avenue station. Take the UPTOWN N, Q or R Train to Lexington Ave/59 Street, transfer to the UPTOWN #6 train and take it to 68th Street.

**From Grand Central Station:**  
(<http://grandcentralterminal.com/info/directions.cfm>)

By Bus: Take Eastbound M42 to East 42nd St/First Ave and transfer to the Northbound MI5 . Take MI5 to 70Th Street.  
By Subway: Take the UPTOWN #6 train to 68th Street.

**From Port Authority Bus Terminal:**  
([http://www.ny.com/transportation/port\\_authority.html](http://www.ny.com/transportation/port_authority.html))

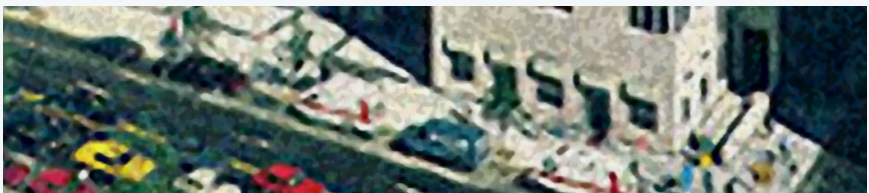
By Subway: Take UPTOWN E Train to Lexington Ave/53rd St. Transfer to the UPTOWN #6 train and take it to 68th Street.  
By Bus: Take Eastbound M42 to East 42nd St/First Ave and transfer to the Northbound MI5 . Take MI5 to 70Th Street.



**LaGuardia Airport:**  
(<http://www.panynj.gov/airports/la Guardia.html>),  
718-533-3400

**JFK Airport:**  
(<http://www.panynj.gov/airports/jfk.html>),  
718-244-4444

**Newark Airport:**  
(<http://www.panynj.gov/airports/newark-liberty.html>),  
973-961-6000





**Hotels convenient to the  
NewYork-Presbyterian Hospital /  
Weill Cornell Medical Center**

Rates are subjected to change.  
Requests for further information and  
availability should be directed to the  
specific management at the contact  
number listed.

NewYork-Presbyterian Hospital / Weill  
Cornell Medical Center is located in the  
Upper East Side of Manhattan. Nearby  
neighborhoods include Yorkville,  
Midtown East, and Murray Hill

**The following does not charge tax:**

**The Helmsley Tower**

1320 York Avenue  
(between 70th & 71st Streets)  
(212) 472-8400 or 1-800-HM-TOWER

Single room	\$255
Junior Suite	\$265
Corner room	\$275
Bedroom Suite	\$300

**The following charge tax:**

**Marriott Courtyard** (2 locations)

Weill Cornell Medical College  
Corporate Booking  
Code: ZUJ

**Midtown East,**

866 Third Ave  
between 52nd and 53rd St  
[http://www.marriott.com/hotels/travel/  
nycme-courtyard-new-york-manchattan-  
midtowneast/?corporateCode=ZUJ&toDate=  
&fromDate=&app=resvlink](http://www.marriott.com/hotels/travel/nycme-courtyard-new-york-manchattan-midtowneast/?corporateCode=ZUJ&toDate=&fromDate=&app=resvlink)

**Upper East Side,**

410 E 92nd St  
between 1st and York Ave  
[http://www.marriott.com/hotels/travel/  
nycmh-courtyard-new-york-manchattan-  
upper-eastside/?corporateCode=ZUJ&toD  
ate=&fromDate=&app=resvlink](http://www.marriott.com/hotels/travel/nycmh-courtyard-new-york-manchattan-upper-eastside/?corporateCode=ZUJ&toDate=&fromDate=&app=resvlink)

**Holiday Inn – Midtown**

440 West 57th Street  
(800) 236-1465  
(212) 581-8100  
<http://www.ichotelsgroup.com/>

Single room \$204-350

**Holiday Inn Express – Fifth Avenue**

15 West 45th Street  
(212) 302-9088  
(800) 236-1465  
<http://www.ichotelsgroup.com/>

Single room \$269-344

**Gershwin Hotel - New York**

7 East 27th Street  
(212) 545-8000  
<http://www.gershwinhotel.com/>

Single Room \$269-419

**414 Inn**

414 West 46th Street  
(212) 399-0006, (212) 957-8716 (fax)  
<http://www.414hotel.com/>

November \$255-265  
December \$249-300  
January \$159-295

**Bentley Hotel**

500 East 62nd St.  
(212) 644-6000  
[www.hotelbentleynewyork.com](http://www.hotelbentleynewyork.com)

Standard room – November \$229-\$499  
Standard room – December \$199-\$499  
Standard room – January \$189-\$239

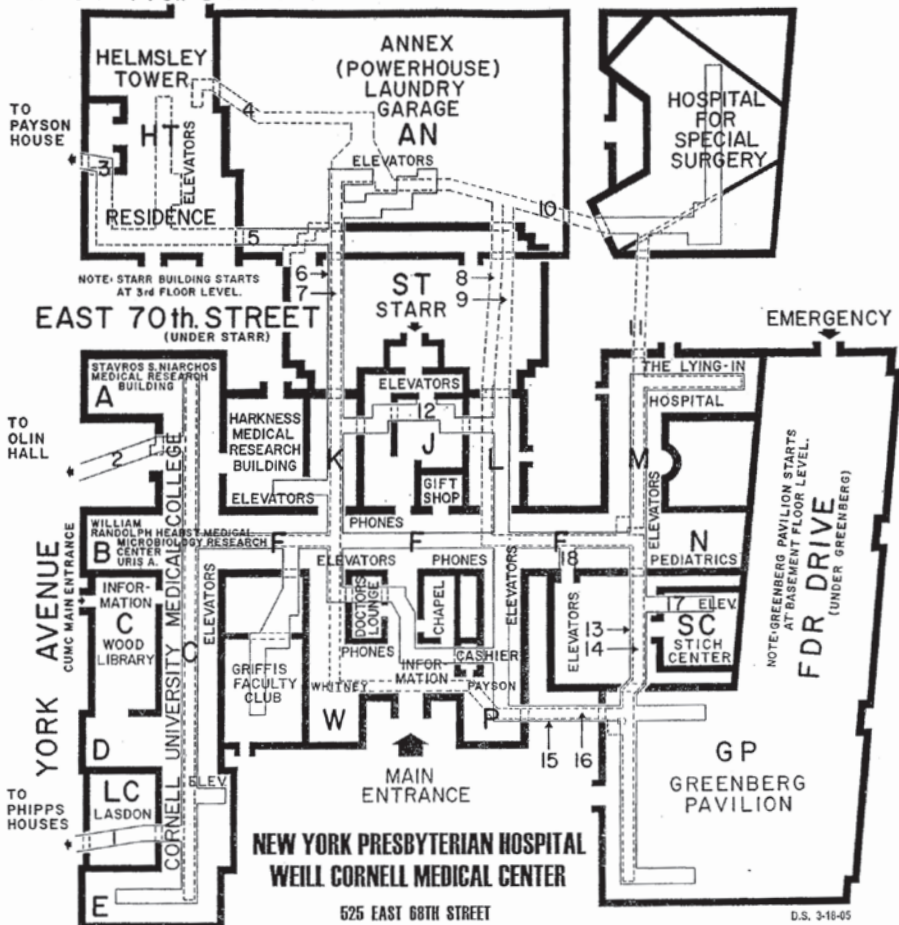
(additional charge of \$20/room for weekends)

**Times Square Bed and Rooms**

[www.furnishedquarters.com](http://www.furnishedquarters.com)



EAST 71st. STREET



D.S. 3-16-05

EAST 68th. STREET

